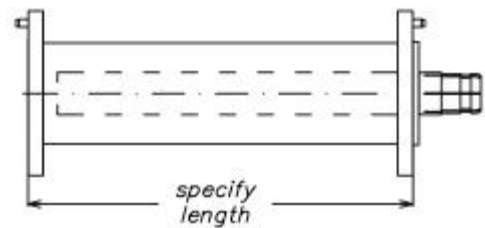


- **General:** Rigid coaxial lines are manufactured with the highest quality standards, by highly qualified personnel and are subject to our rigorous “three - phase” quality control integration process with the goal of providing the highest degree of quality as well as perfect finish.

Line Sections, Flanged

- Copper-brass construction transmission line of customer specified length, flanged both ends with fixed and swivel flange. Includes one anchor insulator connector, one O-ring and one stainless steel hardware set (available with aluminum outer conductor - 140.x12/L).

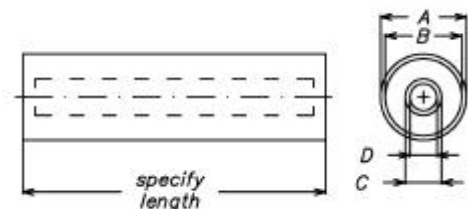
Type	Line Size	L
140.112	7/8"EIA	Specified By Customer
140.212	1 5/8"EIA	
140.312	3 1/8"EIA	
140.412	4 1/2"EIA	
140.512	6 1/8"EIA	



Line Sections, Unflanged

- Copper unflanged transmission line of customer specified length, no connector.

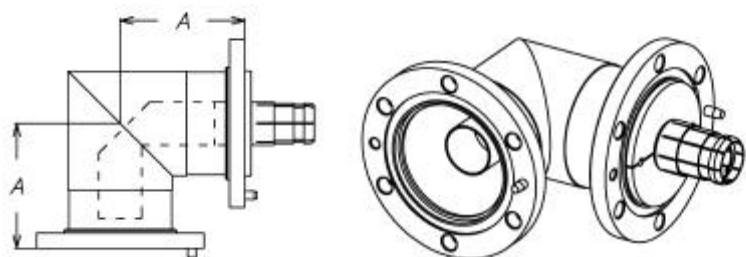
Type	Line Size	A (mm)	B (mm)	C (mm)	D (mm)	L
140.101	7/8"EIA	22.2	19.99	8.66	7.39	Specified By Customer
140.201	1 5/8"EIA	41.27	38.78	16.87	14.93	
140.301	3 1/8"EIA	79.4	76.88	33.4	31.26	
140.401	4 1/2"EIA	106	103	44.8	42.8	
140.501	6 1/8"EIA	155.6	151.9	66	64	



90° Miter Elbow, Flanged

- 90° Miter elbow with swivel flanges on both ends. Includes one anchor insulator connector, one O-ring and one stainless steel hardware set.

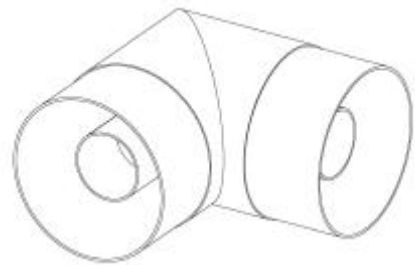
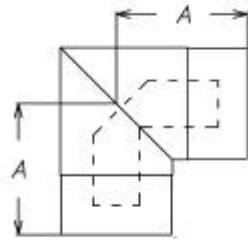
Type	Line Size	A (mm)
140.106	7/8"EIA	69.9
140.206	1 5/8"EIA	63.5
140.306	3 1/8"EIA	96.8
140.406	4 1/2"EIA	120
140.506	6 1/8"EIA	139.7



90° Miter Elbow, Unflanged

- 90° Miter elbow, unflanged. Includes only one unsupported inner conductor.

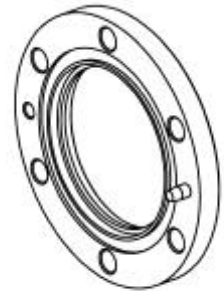
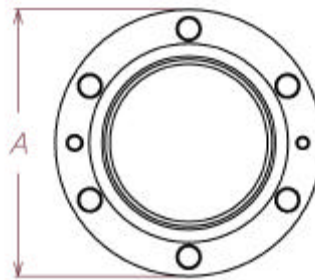
Type	Line Size	A (mm)
140.107	7/8"EIA	65.55
140.207	1 5/8"EIA	58.72
140.307	3 1/8"EIA	90.47
140.407	4 1/2"EIA	100
140.507	6 1/8"EIA	203.2



Fixed Flange

- Brass fixed flange with silver solder ring insert, for silver brazing to outer conducting tubing.

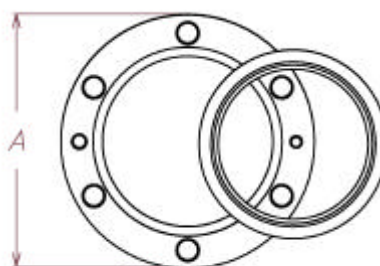
Type	Line Size	A (mm)
140.109	7/8"EIA	57.1
140.209	1 5/8"EIA	88.9
140.309	3 1/8"EIA	131.7
140.409	4 1/2"EIA	160
140.509	6 1/8"EIA	206.4



Swivel Flange

- Brass swivel flange with silver solder ring insert, for silver brazing to outer conducting tubing.

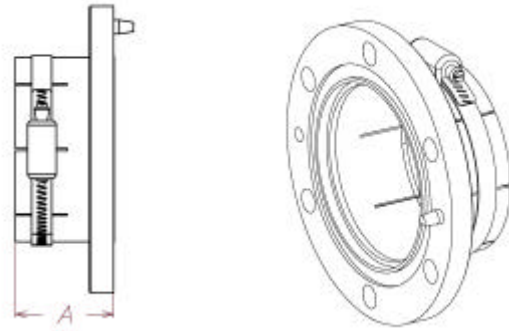
Type	Line Size	A (mm)
140.110	7/8"EIA	57.1
140.210	1 5/8"EIA	88.9
140.310	3 1/8"EIA	131.7
140.410	4 1/2"EIA	160
140.510	6 1/8"EIA	206.4



Unpressurizing Fixing

- Unpressurized field flange for indoor use. Includes one stainless steel hose clamp and hardware set.

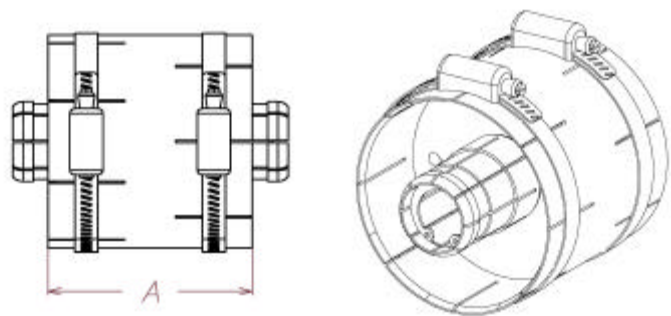
Type	Line Size	A (mm)
140.108	7/8"EIA	29.7
140.208	1 5/8"EIA	46
140.308	3 1/8"EIA	46
140.408	4 1/2"EIA	46
140.508	6 1/8"EIA	82.5



Unpressurizing Coupling

- Unflanged line coupling. Includes supported inner conductor connector and two stainless steel hose clamps.

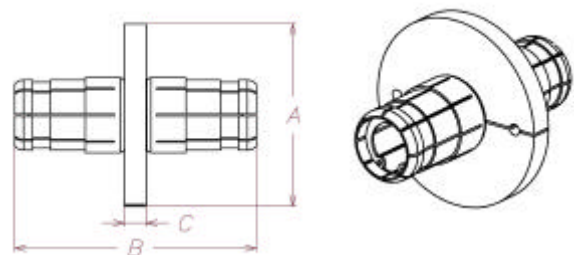
Type	Line Size	A (mm)
140.102	7/8"EIA	39
140.202	1 5/8"EIA	57.2
140.302	3 1/8"EIA	82.5
140.402	4 1/2"EIA	108
140.502	6 1/8"EIA	114



Anchor Insulator Connector

- Anchor inner silver-plated connector with PTFE disc insulator, for unflanged transmission line, spring loaded. Use with unflanged line coupling.

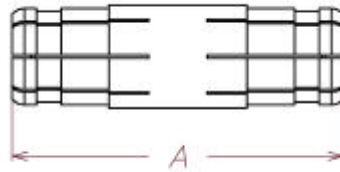
Type	Line Size	A (mm)	B (mm)	C (mm)
140.105	7/8"EIA	20.7	63	4.8
140.104		22.2		
140.205	1 5/8"EIA	41.8	82.6	6.4
140.204		41.27		
140.305	3 1/8"EIA	81.3	108	9.5
140.304		79.4		
140.405	4 1/2"EIA	105	100	9.8
140.404		106		
140.505	6 1/8"EIA	154	140	11.1
140.504		155.57		



Inner Conductor Connector

- Unsupported inner conductor connector, silver-plated, spring-loaded.

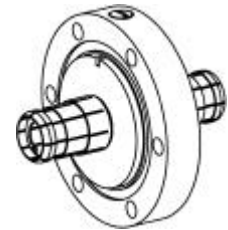
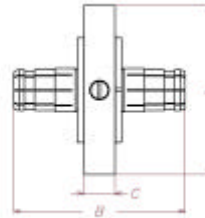
Type	Line Size	A (mm)
140.103	7/8"EIA	63
140.203	1 5/8"EIA	82.6
140.303	3 1/8"EIA	108
140.403	4 1/2"EIA	100
140.503	6 1/8"EIA	140



Gas Barrier

- Gas Barrier with gas inlet port. Includes stainless steel hardware set and two silicone O-rings.

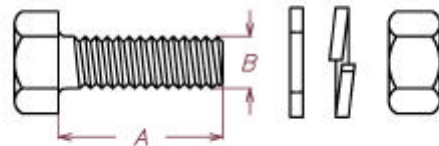
Type	Line Size	A (mm)	B (mm)	C (mm)
140.111	7/8"EIA	57.2	84.1	20.75
140.211	1 5/8"EIA	88.9	98.4	20.57
140.311	3 1/8"EIA	131.8	121.43	24.43
140.411	4 1/2"EIA	160	130	41
140.511	6 1/8"EIA	215.9	176.65	49.35



Hardware Set

- Stainless steel hardware set for flanges.

Type	Line Size	Qty per set	A (mm)	B
140.113	7/8"EIA	3	30	M6
140.213	1 5/8"EIA	4	35	M8
140.313	3 1/8"EIA	6	35	M10
140.413	4 1/2"EIA	8	45	M10
140.513	6 1/8"EIA	12	45	M10



Silicone O-ring

- Silicone-rubber O-ring for flanges.

Type	Line Size
400.101	7/8"EIA
400.102	1 5/8"EIA
400.103	3 1/8"EIA
400.104	4 1/2"EIA
400.105	6 1/8"EIA

